

Standing In His Presence

Anna Weister Andersson

Arr: C.Wallin 2013

Am11 Em11 Dm11 G¹³_{SUS} C/E F^b/₉ G⁷_{SUS} Am11 FMAJ⁷ G/F FMAJ⁷ G^{13(b9)}_{SUS}

Musical staff for measures 1-4, showing bass clef, 6/8 time signature, and quarter notes with stems.

Am11 Em11 Dm11 D^b13(#11) C^b/₉ Dm11 C/E Am11 FMAJ⁹ G/F FMAJ⁹

Musical staff for measures 5-8, showing bass clef and quarter notes with stems.

5

A G C/E F G/F F

Musical staff for measures 9-12, showing bass clef and quarter notes with stems.

9

G C/E F G/F F

Musical staff for measures 13-16, showing bass clef and quarter notes with stems.

13

G C/E F G/F F C/E

Musical staff for measures 17-20, showing bass clef and quarter notes with stems.

17

B Dm11 G11 G/F C/E E⁷(¹¹/₉) Am11 E⁷(¹¹/₉) A⁷(¹¹/₉) F¹³_{SUS} B^bMAJ⁹ FMAJ⁷/A G11 G^{13(b9)}_{SUS}

Musical staff for measures 21-24, showing bass clef and quarter notes with stems.

21

C Am11 Em11 Dm11 G¹³_{SUS} C^b/₉ Dm11 C/E Am11 FMAJ⁹ G/F FMAJ⁹

Musical staff for measures 25-28, showing bass clef and quarter notes with stems.

27

D G C/E F G/F F

Musical staff for measures 29-32, showing bass clef and quarter notes with stems.

31

G C/E F G/F F

35

G C/E F G/F F C/E

39

E D_M11 G₁₁ G/F C/E E⁷₍₁₃₎ A_M11 E⁷₍₁₃₎ A_M11 E^b₁₃(#11) B^b_{MAJ}⁷ F_{MAJ}⁷/A G₁₁

43

F D_M11 A_M11 G_M11 G/F C/E E^b₁₃(#11)

49

D_M11 A_M11 A^b_{MAJ} G₁₁ C/E E^b₁₃(#11)

53

G D_M11 A_M11 G_M11 F[#]_{MAJ}⁹(#11) G/F C/E E⁷₍₁₃₎ E^b₁₃(#11)

57

D_M11 A_M11 A^b_{MAJ}⁹ G_{SUS}¹³ C/E

61

H D_M11 G₁₁ G/F C/E E⁷₍₁₃₎ C^b₉ A_M11 A⁷₍₁₃₎ G/F C/E

65

D_M11 G₁₁ G/F C/E A_M11

69

DM11 G¹³_{SUS} G/F E^bMAJ⁹(#11) C/E B^b13(#11) AM11 B^bMAJ⁹ FMAJ⁹/A G11

73

I DM11 G11 G/F C/E E7(⁴/₃) AM11 E^b13(#11)

79

B^bMAJ⁹ FMAJ⁹/A G11 G/F C/E B^b13(#11) AM11 E¹³(#11) E^b13(#11) C/E

83

J DM11 G11 G/F C/E E7(⁴/₃) AM11 A^b13(#11) E^b13(#11)

87

B^bMAJ⁹ FMAJ⁹/A G11 G/F C/E E7(⁴/₃) B^b13(#11) AM11 EM11 A7(^b/₁₃) E^b13(b9)

91

K DM11 G11 G/F C/E E7(⁴/₃) AM11 E^b13(#11) B^bMAJ⁹ FMAJ⁹/A G⁷_{SUS}

95

L

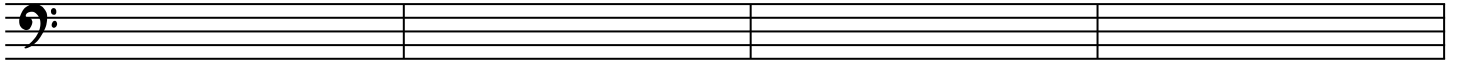
101

105

M C⁷ F/C Fm/C C D⁷/C F/C C

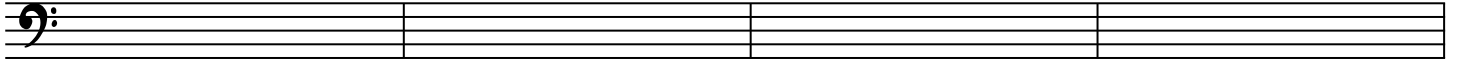
109

C⁷ F/C F_M/C C D⁷/C F/C C



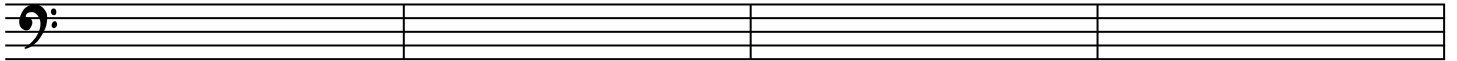
113

C⁷ F/C F_M/C C D⁷/C F/C C



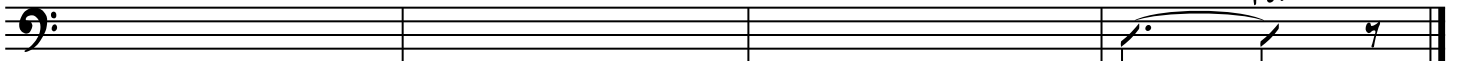
117

C⁷ F/C F_M/C C D⁷/C F/C C



121

C⁷/B^b F/A F_M6/A^b C/G D/F[#] F C



125

Rit.