

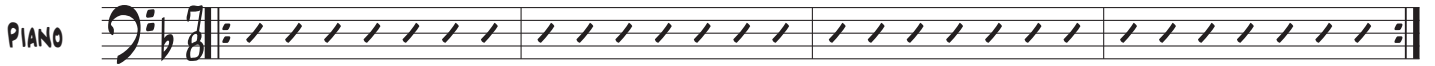
# Soon And Very Soon

Trummor/Gitarr/Rhodes

Crouch  
Arr: C.Wallin 2020

**F**  
Jammigt med lätt mixo-touch

Öppen repris A1 on Q



**A1**  
5 F B<sup>b</sup>/F F B<sup>b</sup>/F G<sup>M7</sup> C<sup>9</sup> C<sup>11</sup> F B<sup>b</sup>/F

PNO.



9 F B<sup>b</sup>/F F E<sup>b</sup><sub>13</sub>(#11) D<sup>M7</sup> D<sup>7(b9)</sup>/F# G<sup>M7</sup> F<sup>7/A</sup> B<sup>b</sup><sub>M6</sub> F C<sup>11</sup> F

**A2**  
13 F B<sup>b</sup>/F F B<sup>b</sup>/F G<sup>M7</sup> C<sup>9</sup> C<sup>11</sup> F B<sup>b</sup>/F

PNO.



17 F B<sup>b</sup>/F F E<sup>b</sup><sub>13</sub>(#11) D<sup>M7</sup> D<sup>7(b9)</sup>/F# G<sup>M7</sup> F<sup>7/A</sup> B<sup>b</sup><sub>M6</sub> F C<sup>11</sup> F C<sup>11</sup>

**A3**  
22 F B<sup>b</sup>/F F B<sup>b</sup>/F G<sup>M7</sup> C<sup>9</sup> C<sup>11</sup> F B<sup>b</sup>/F

PNO.



26 F B<sup>b</sup>/F F E<sup>b</sup><sub>13</sub>(#11) D<sup>M7</sup> D<sup>7(b9)</sup>/F# G<sup>M7</sup> F<sup>7/A</sup> B<sup>b</sup><sub>M6</sub>

29 F C<sup>11</sup> E<sup>b</sup><sub>9</sub> G<sup>9</sup> C<sup>11</sup> F D<sup>7#9</sup><sub>5</sub> G<sup>9</sup> C<sup>11</sup> F

PNO.



**B1**  
32 B<sup>b</sup> C F D<sup>7#9</sup><sub>5</sub> G<sup>M7</sup> C<sup>7</sup> B<sup>b</sup>/F F F<sup>7</sup>

PNO.



36 Bb C7 C#0 Dm7 Ab7 Gm7 C7 Cm11 F13sus F7alt

PNO. [Musical staff with bass clef, notes, and rests]

40 B2 Bb C F D7#9 Gm7 C7 Bb/F F B9(#11)

PNO. [Musical staff with bass clef, notes, and rests]

44 Bb C7 C#0 Dm7 Ab7 Gm7 C7 F

PNO. [Musical staff with bass clef, notes, and rests]

48 A4 F Bb/F F Bb/F Gm7 C9 C11

PNO. [Musical staff with bass clef, notes, and rests]

51 F Bb/F F Bb/F F Eb13(#11) Dm7

PNO. [Musical staff with bass clef, notes, and rests]

54 D7(b9)/F# Gm7 F7/A Bbm6 F C11 F Dbmaj9 Cm11

PNO. [Musical staff with bass clef, notes, and rests]

57 C Bbmaj9 A7#9 Dm11 Ebmaj13 Gmaj9 Bbmaj9 Ebmaj9 Gm11

PNO. [Musical staff with treble clef, notes, and rests]

61 Dmaj9 Db7#9 F#m11 Gm11 Dbmaj9 Bb/O Gmaj9 F#7#9 Dsus9 Dmaj9

PNO. [Musical staff with treble clef, notes, and rests]

65 Bbmaj9/O C13sus A5 F F/E Dm7 C7sus F/Bb Fadd9/A Gm7 Fadd4

PNO. [Musical staff with treble clef, notes, and rests]

69 C/E Dm11 C11 Bb9 F/A Gm11 Fsus2 C11 Dm11 C#0 C11 F11 Bb9 F/A Ab9

PNO. [Musical staff with treble clef, notes, and rests]

73 D7(b9)/F# Gm7 F9/A Bbm6 Bbmaj13 C13sus(b9) Eb9

PNO. [Musical staff with treble clef, notes, and rests]

RIT.