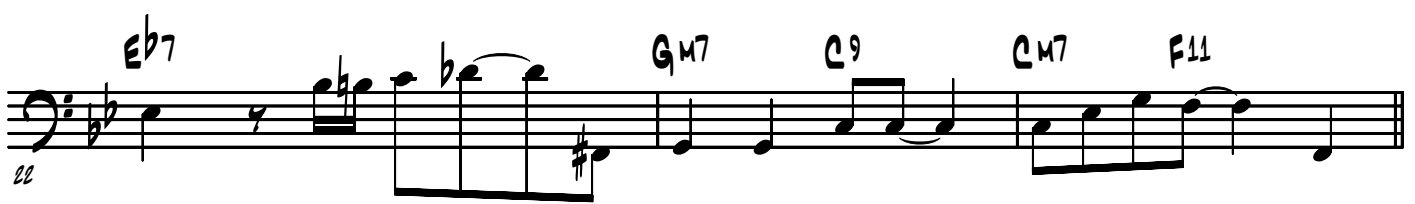


Acoustic Bass

SHAKE

version 2

S. Ljungbladh
Arr. C. Wallin



25 *v*

28

31 *AD LIB* **D** *Bb7*

34 *Eb7* *Gm7* *C9* *Cm7* *F11*

37 *Bb7* *Eb7* *Gm7* *C9*

40 *Cm7* *F11* **E** *Cm9* *Gm11* *G7#9#5*

43 *Cm9* *Ab13(#11)* *Gm11* *C#m11* *Cm11*

46 *Gm11* *E7ALT* *Am9* *A7#9#5* *Ab13(#11)* *F13sus*

F 49 *Bb7* *Eb7* *Gm7* *C9*

BASS

SHAKE

52

C M7 F11 Bb7 Eb7

55

G M7 C9 Bb13 B13 C13 C#13 D13 Eb13 E13 E13 G Bb7

58

Eb7 G M7 C9 C M7 F11

61

Bb7 Eb7 G M7 C9

64

C M7 F11 G M7 C9 C M7 F11 E13(#11)

67

A13sus Ab13(#11) Eb9 E13(#11) BMA913 C13sus F13sus D7#9 G M7 C9

70

C M7 F11