

Jul, Jul Strålande Jul

Gustaf Nordqvist
Arr: Christoffer Wallin

16 E11 AMaj/E G13sus G13(b9)

21 CMaj Fmin6/C CMaj Fmin6/C CMaj FMaj9/C

21

F/C Fm6/C CMaj FMaj G/F FMaj G/F

27

Dm9 E/D Dm9 E/D G11 CMaj/G

33

Fmin(maj7)/G CMaj/G Am11 Dadd9/A Dm/A E/A

39

CMaj Fmin6/C CMaj Fmin6/C CMaj FMaj9/C

45

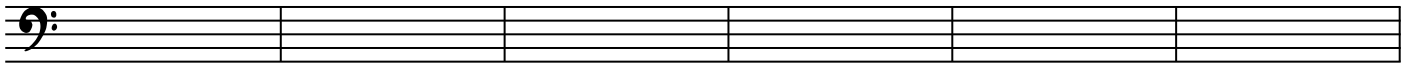
G13(b9)/C CMaj Fmin6/C CMaj Fmin6/C CMaj

51

FMaj9/C F/C Fm6/C CMaj FMaj G/F FMaj

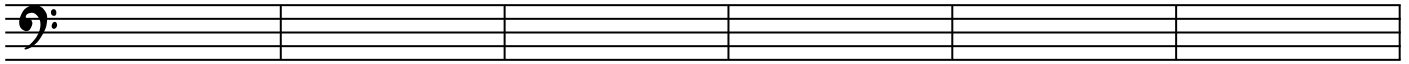
57

G/F DM9 E/D DM9 E/D G11



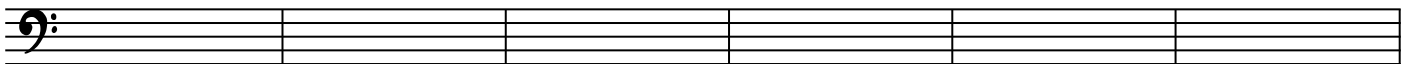
63

CMAS/G FMIN(MAJ7)/G CMAS/G AM11 DA009/A DM/A



69

E/A CMAS FMIN6/C CMAS FMIN6/C CMAS



75

FMA57/C A^bMA5 B^b13(b9) B^b13sus(b9) 84 E^bMA5 A^bMIN6 E^bMA5



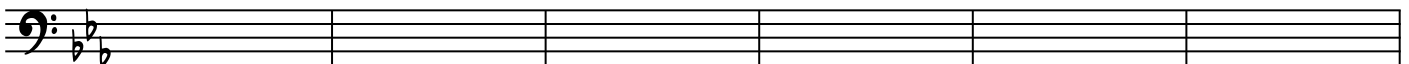
81

A^bMIN6 E^bMA5 A^bMA5 FM9 A^bMIN6 E^bMA5 E^b/G A^bMA5



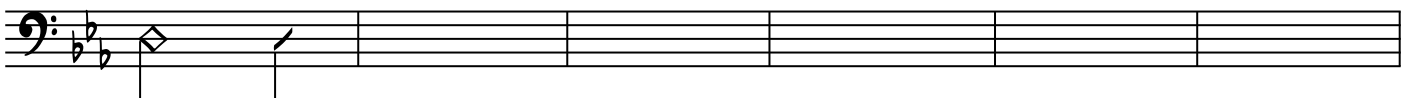
87

B^b/A^b A^bMA5 B^b/A^b FM7 G FM9



93

G G7^{#9} CM11 GM7/B^b FA009/A E^b/A^b FM7



99

CMAD09 A^bMIN6 G 8



105

Rit.