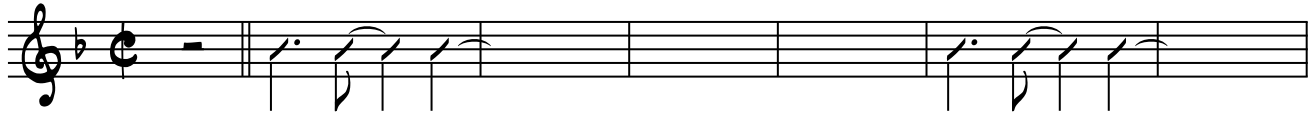


God Will Multiply Version 2

$E^b_{MAJ}^{13}$ D_{MIN}^{11} C_{SUS}^{13}

G_{MIN}^{11} F/A D_{MIN}^{11}



B^b_{MAJ} D_{MIN}^{11} F/A

G_{MIN}^{11}

C_{SUS}^{13}



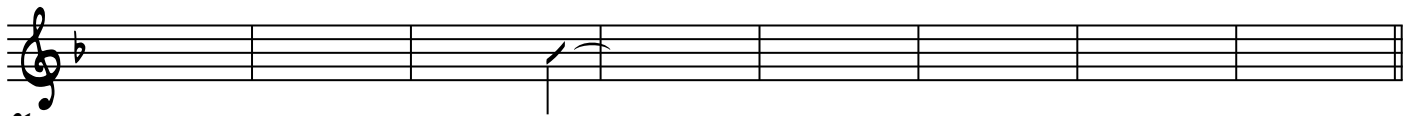
7

13 F $F_{MAJ/A}$ B^b_{MAJ} C_{11} C/E
SINGLE STRING OM FEELING FINNS



13

F $A^{7(\frac{9}{13})}$ D_{MIN}^{11} G_{MIN}^{11} F/A B^b C_{11} $C^{\#o}$



21

29 D_{MIN}^{11} G_{MIN}^{11} C_{SUS}^{13} F $E^{\#7}$ $A^{7(\frac{9}{13})}$
2-4 SQUACK



29

D_{MIN}^{11} $A^{b13(\#11)}$ G_{MIN}^{11} C_{SUS}^7



37

B^b_{MAJ} F/A G_{MIN}^7 C_{SUS}^7



43

47 F $F_{MAJ/A}$ B^b_{MAJ} C_{11} C/E
SINGLE STRING



47

F A7(¹²/₁₃) DMIN¹¹ GMIN¹¹ F/A B^b C11 C#^o



55

63 DMIN¹¹ GMIN¹¹ C¹³SUS F E^{o7} A7(¹²/₁₃)
2-4 SQUACK



63

71 DMIN¹¹ GMIN¹¹ C¹³SUS F E^{o7} A7(¹²/₁₃)



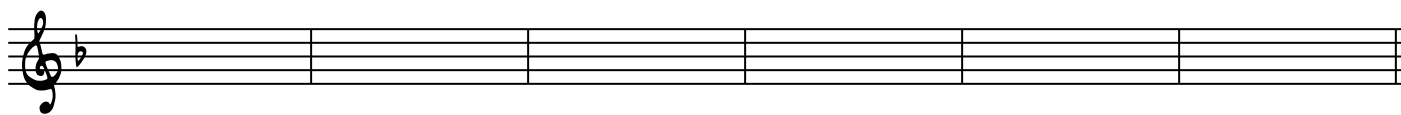
71

79 DMIN¹¹ GMIN¹¹ C¹³SUS F E^{o7} A7(¹²/₁₃)



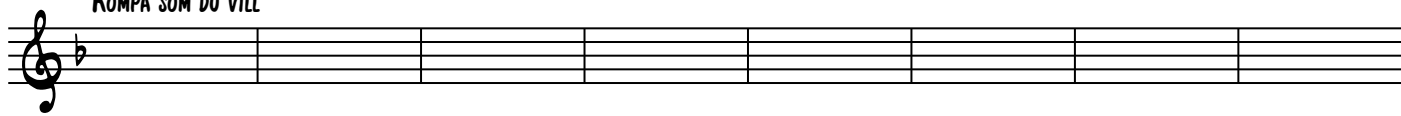
79

DMIN¹¹ GMIN¹¹ C¹³SUS



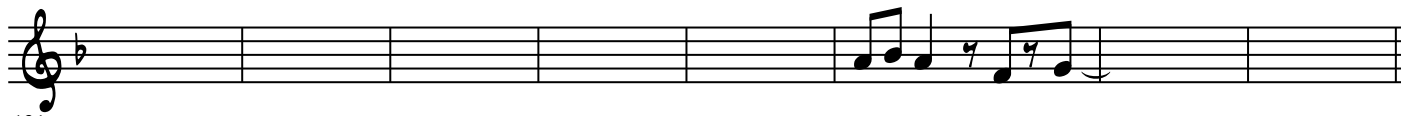
87

93 DMIN¹¹ GMIN¹¹ E^bMAJ E^{o7} A7(¹²/₁₃)
KOMPA SOM DU VILL



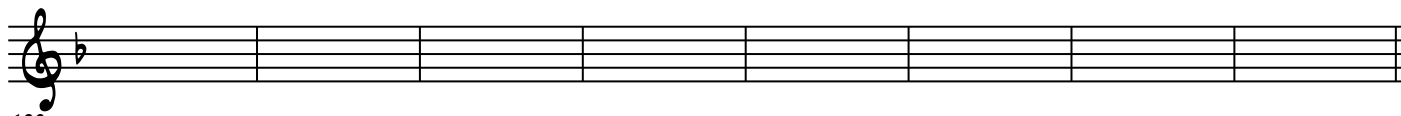
93

DMIN¹¹ GMIN¹¹ E^bMAJ E^bMAE MAE^bMAE MAJ DMIN¹¹ E^{o7} A7(¹²/₁₃)



101

109 DMIN¹¹ GMIN¹¹ E^bMAJ E^{o7} A7(¹²/₁₃)



109

117 DMIN¹¹ GMIN¹¹ E^bMAJ E^{o7} A7(¹²/₁₃)



117

125 D^{MIN}11

G^{MIN}11

E^bMAJ

E^ø7

A⁷(^{#9}/₁₅)

A musical staff in treble clef with a key signature of one flat (Bb). The staff contains eight measures of music, each with a single note. The notes are: D4 (measure 125), G3 (measure 126), Eb3 (measure 127), E3 (measure 128), A3 (measure 129), A3 (measure 130), F3 (measure 131), and F3 (measure 132). The number '125' is written below the first measure.

133 D^{MIN}11

G^{MIN}11

E^bMAJ

E^ø7

A⁷(^{#9}/₁₅) F¹³(#11)

A musical staff in treble clef with a key signature of one flat (Bb). The staff contains eight measures of music, each with a single note. The notes are: D4 (measure 133), G3 (measure 134), Eb3 (measure 135), E3 (measure 136), A3 (measure 137), A3 (measure 138), F3 (measure 139), and F3 (measure 140). The number '133' is written below the first measure.

141 B^bMAJ

F/A

G^{MIN}9

C⁷SUS

145

10

A musical staff in treble clef with a key signature of one flat (Bb). The staff contains five measures of music. Measure 141 has a Bb4 note. Measure 142 has an F/A chord (F4 and A4 notes). Measure 143 has a G4 note. Measure 144 has a C7sus chord (C4, E4, G4, Bb4 notes). Measure 145 has a whole rest. The number '141' is written below the first measure.